

B Marshall Marine Limited



"Building & operating exceptional vessels"

Marshall Jakeman Marine Ltd



MARSHALL JAKEMAN
MARINE LIMITED

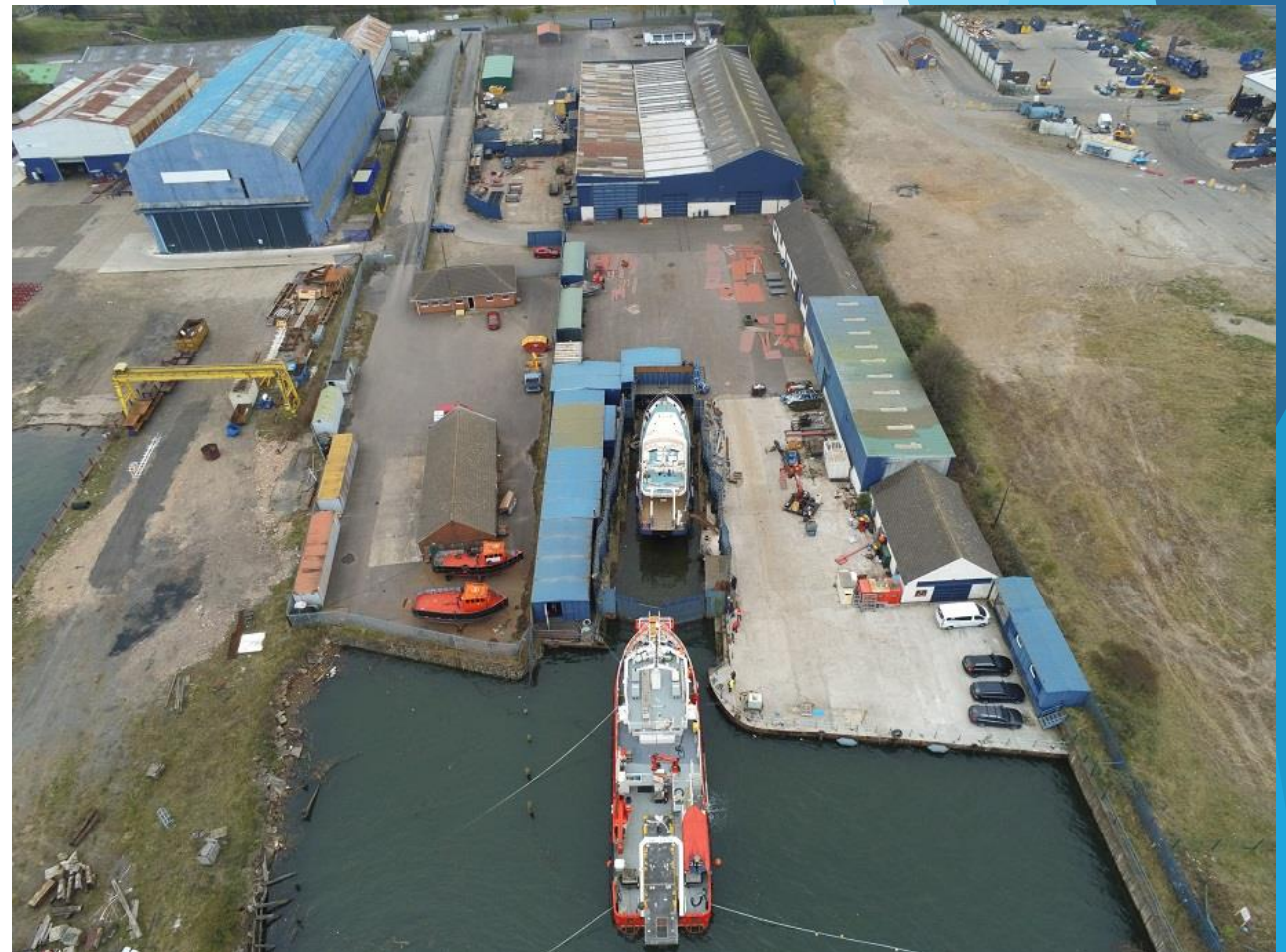
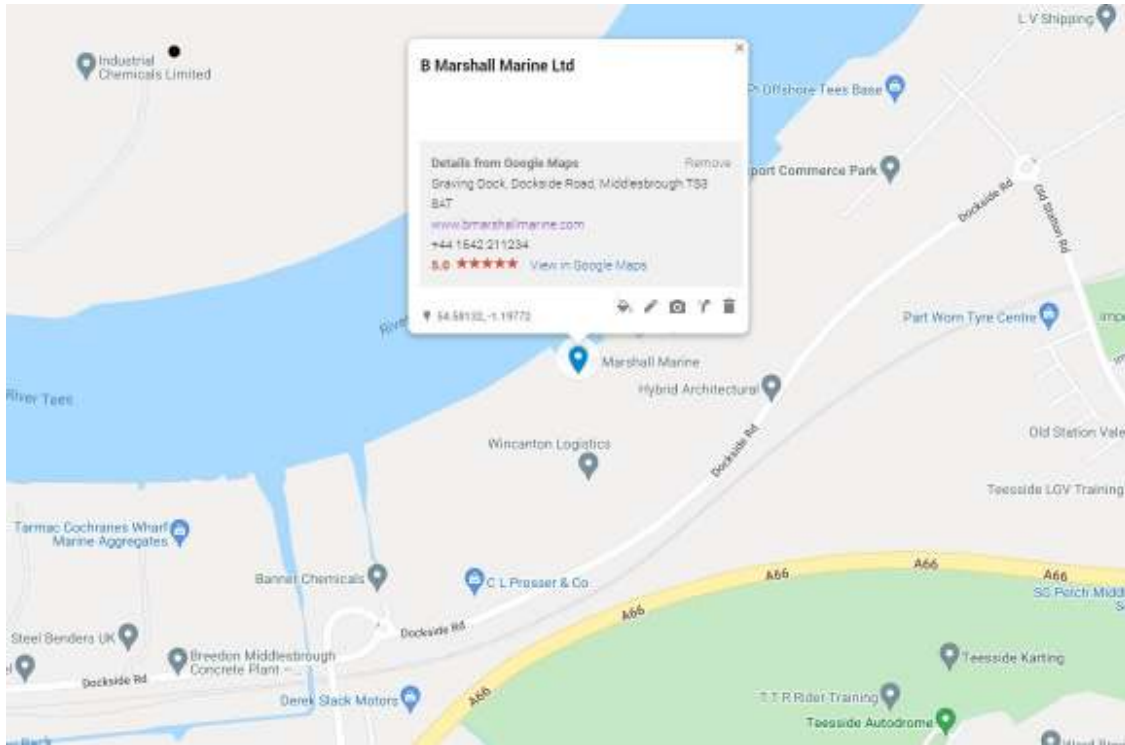


B MARSHALL
MARINE LTD

Location



MARSHALL JAKEMAN
MARINE LIMITED



Barry Marshall

- ▶ Time served Anglesmith at Cleveland Bridge
- ▶ Formed Marshall Engineering in 1979, starting with Farm buildings and eventually supplying Cleveland Sitesafe Ltd with all fabrication still to this day
- ▶ Following owning several craft decided to build the St George a 43ft flybridge cruiser
- ▶ Moved to Middlesbrough in 2004 and started the Marshall Art



The St George



The Marshall Art

B Marshall Marine Ltd

- ▶ Barry began discussions with Tony Curtis of Sub Aqua Diving services to develop a specialist, compact Dive Support vessel.
- ▶ From this the idea for a four-point mooring vessel, designed specifically for offshore diving support, ROV & marine survey work was born.
- ▶ B Marshall Marine Ltd was established in 2010 to bring this concept into fruition.
- ▶ Chris Jakeman was involved on a part time basis for 2 years and joined the Business full time in 2013.
- ▶ In April 2015 the Curtis Marshall was completed and now turns over around £1 million per annum.



B MARSHALL
MARINE LTD

DSV Curtis Marshall

- MCA Cat 1 coded vessel - 150 miles from a safe haven
- 26m LOA < 24m waterline
- <200 tonne
- 18 berth (6 crew + 12 charterers personnel)
- Cruising speed 11 knots circa 100l/hr fuel consumption
- 12.5 tonne pedestal mounted crane
- 35 tonne max deck load
- 6 tonne hydraulic A frame
- 4 point mooring system with self laying capability
- 2 x 8m booms fitted to tow surveying equipment such as side scans
- Walkabout control for winches, thruster, propulsion and steering.



Marshall Jakeman Marine Limited

- ▶ Marshall Jakeman Marine Limited was formed in 2019 to convert the Marshall Art from pleasure cruiser to dedicated survey vessel.
- ▶ Directors - Barry Marshall, Chris Jakeman & Ben Marshall
- ▶ The Marshall Art was completed in March 2020 and went straight to work in June 2020 for James Fisher marine Services. Since then she's been on the Teesworks project, Doggerbank cable landing survey and is now on charter with GeoXYZ.
- ▶ Following the success of the Marshall Art another vessel was designed in conjunction with Naval Architects - SC McAllister.
- ▶ The MJM Enterprise began construction in December 2020 and is now well underway at our premises on Dockside Road.



MARSHALL JAKEMAN
MARINE LIMITED

The Marshall Art

- The Marshall Art is a 22m unique survey vessel, which has been carefully modified from a pleasure cruiser
- MCA Cat 2 coded vessel - 60 miles from a safe haven
- The high performance vessel offers a unique range of benefits and features, which makes her ideal for multi-discipline projects.
- 2-Tonne A- Frame,
- Spacious back deck with pre-installed deck fixings
- 4 double berth cabins for charterers
- Dedicated survey sensor mounts and well-equipped workstations for survey crew.
- Seawater wash down pump for environmental samples
- A spacious flybridge offers ready access to antenna fixtures



MJM Enterprise

- Currently under construction, The MJM Enterprise has been designed to be a versatile vessel capable of various operations including survey and ROV.
- 19 berths (12 charterer personnel)
- Spacious working galley with ample capacity for 8-10 dining and lounge area
- Large working deck area including a 1.2m moonpool
- Dedicated lab/processing room with deck store for samples and client office
- 5T A frame with 5m internal clearance and integrated winch
- Using local companies such as SBUK, Creative cutting, J Hewitt crane hire



MJM Enterprise - build progress to date



B Marshall Marine Limited



“Questions?”

Marshall Jakeman Marine Ltd



MARSHALL JAKEMAN
MARINE LIMITED